



# Best Practices for Building Ventilation Improvements and Efficiency

November 19, 2019

**Lawrence Yane**

Sales Manager

Enerquin

# Antitrust Policy

*This webinar will be held in strict compliance with the TAPPI Antitrust Policy.*

*Specifically, discussing prices or pricing policy and discussing any restraint of competition of any kind will not be tolerated.*

## Introduction

**PTOC** (Papermaking Technology and Operations Committee)

*Paula Hajakian*

[phajakian@usg.com](mailto:phajakian@usg.com)

**PAPTAC** (Pulp and Paper Association of Canada)

*Justin Charron*

[Charron.Justin@irvingpaper.com](mailto:Charron.Justin@irvingpaper.com)

# Today's Speaker

Based at Headquarters in Montreal, Quebec, Lawrence Yane's is Sales Manager for Enerquin Air. Lawrence has Bachelor of Mechanical Engineering (1994) and Master of Science (1997) degrees from McGill University in Montreal and has spent his entire professional career in Technical Sales and Product Development. He works closely with clients on paper and tissue air systems issues, focusing on drying efficiency and optimisation which are key factors for maximum production and profitability. Lawrence is also an active member of TAPPI's Yankee Dryer Safety and Reliability Committee.



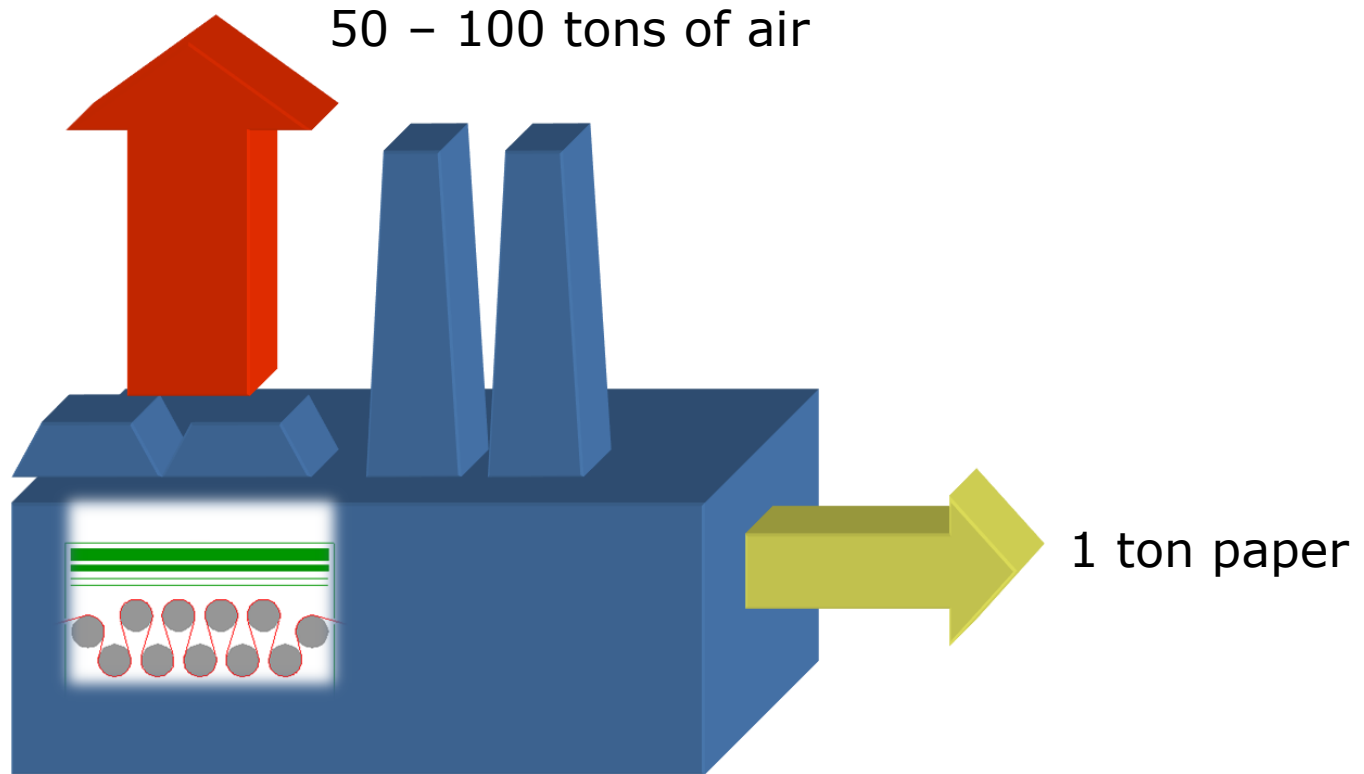
# Agenda

- The importance of building ventilation
- Evaluating existing PM machine room performance
- Greenfield projects
- Considerations for tissue mills
- Case studies
- Heat recovery



Intérieur de l'Usine à Papier. Dolbeau P.Q. — 27

©2019. The contents of this presentation are the property of Enerquin Air Inc. No part of this presentation may be reproduced or transmitted in any form or by any means, electronic or mechanical, including photocopying, recording, or any information storage and retrieval system, without permission in writing from Enerquin Air Inc.



©2019. The contents of this presentation are the property of Enerquin Air Inc. No part of this presentation may be reproduced or transmitted in any form or by any means, electronic or mechanical, including photocopying, recording, or any information storage and retrieval system, without permission in writing from Enerquin Air Inc.



## Poor building ventilation design or poorly-operated systems:

- Significant negative impact on paper mills profitability
- Rapid building deterioration

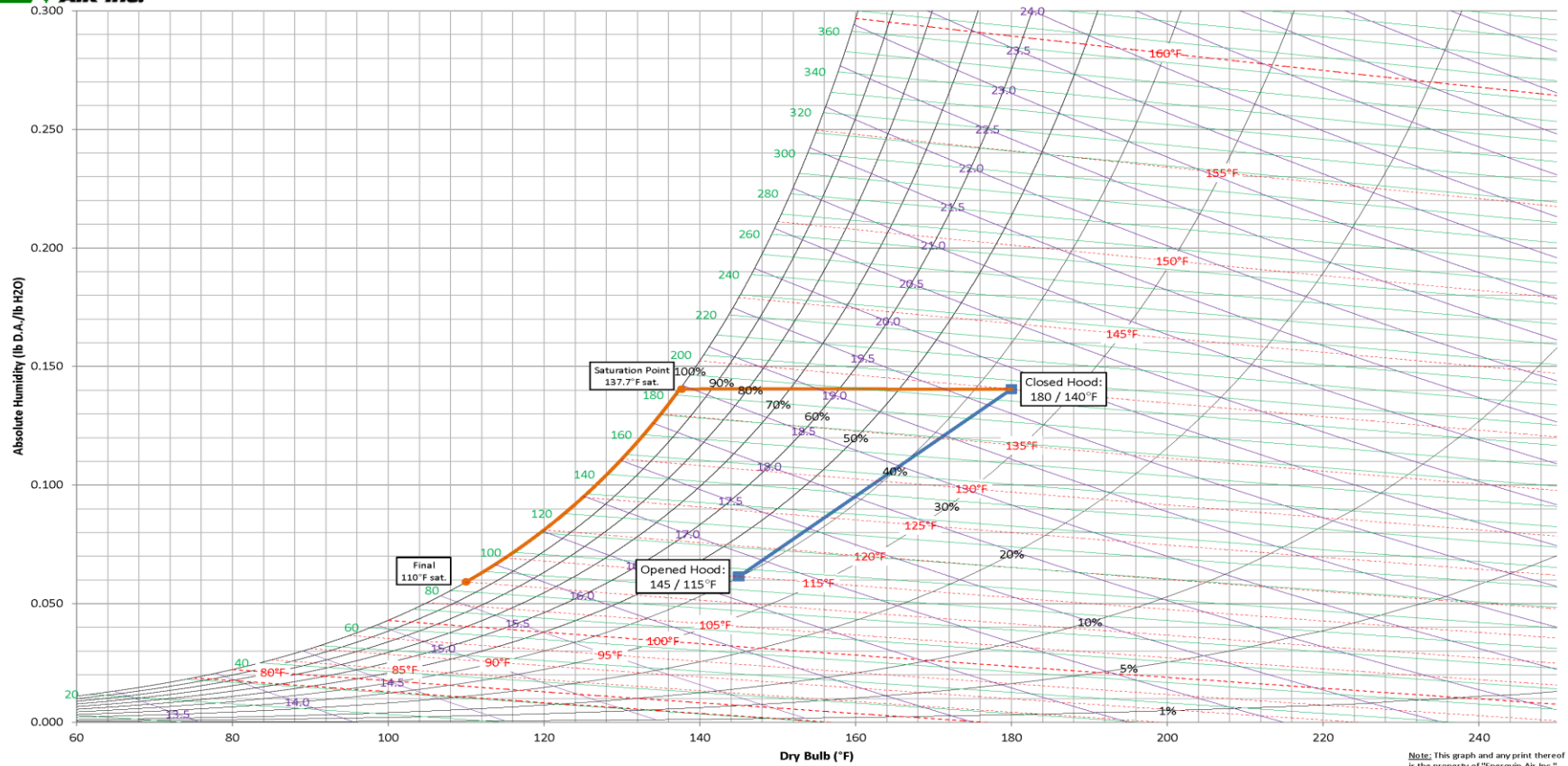
## Well-designed building ventilation systems:

- Provide adequate PM room conditions
- Ensure comfortable working conditions throughout the entire machine room
- Combined with heat recovery units provides free or low cost heating
- Positive impact on paper mills profitability and sustainability





### Psychrometric Chart



Note: This graph and any print thereof is the property of "Enerquin Air Inc."

©2019. The contents of this presentation are the property of Enerquin Air Inc. No part of this presentation may be reproduced or transmitted in any form or by any means, electronic or mechanical, including photocopying, recording, or any information storage and retrieval system, without permission in writing from Enerquin Air Inc.



©2019. The contents of this presentation are the property of Enerquin Air Inc. No part of this presentation may be reproduced or transmitted in any form or by any means, electronic or mechanical, including photocopying, recording, or any information storage and retrieval system, without permission in writing from Enerquin Air Inc.

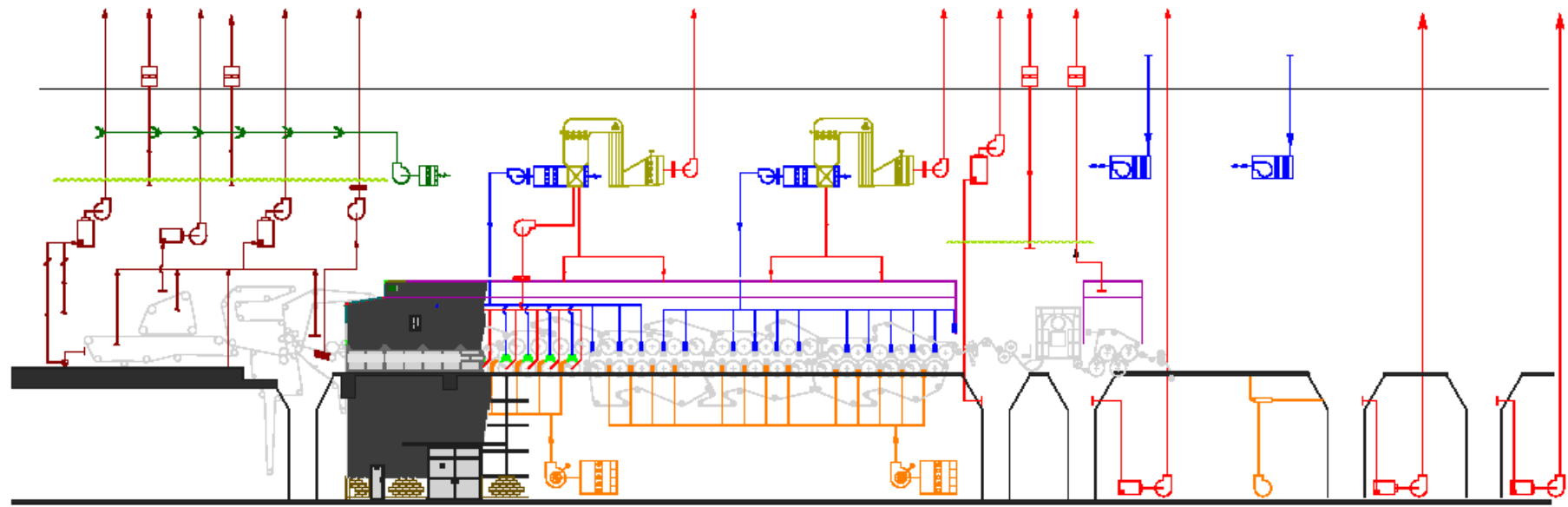
**Step 1:** Establish the required Wet-End ventilation

- Former Exhaust: exhaust as much as possible at the source
- False Ceiling Exhaust System

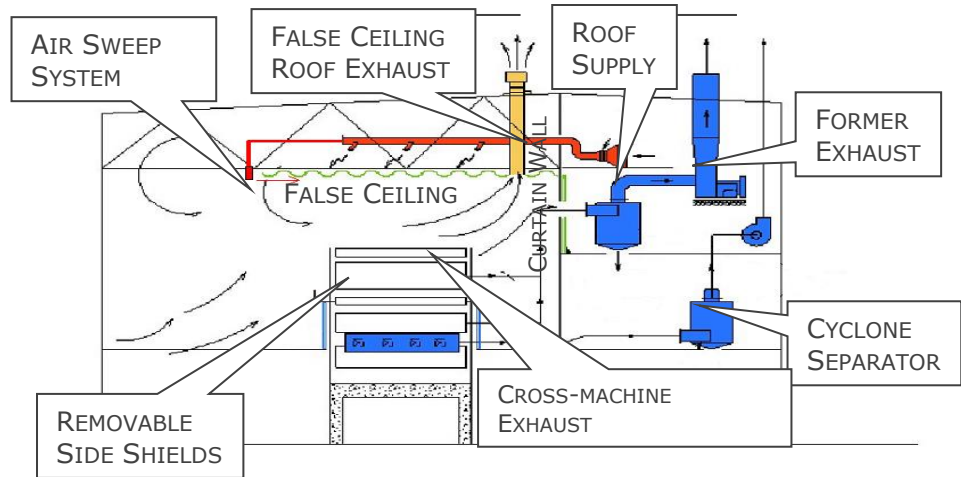
**Step 2:** Assess the need for roof exhausters to provide desired room air change rate during summer time.

**Step 3:** Determine required fresh air supply mass to obtain desirable machine room air balance

**Step 4:** Identify heat recovery potentials to provide free or low cost heating (PM exhaust, turbo blower, flue gas stack, etc).



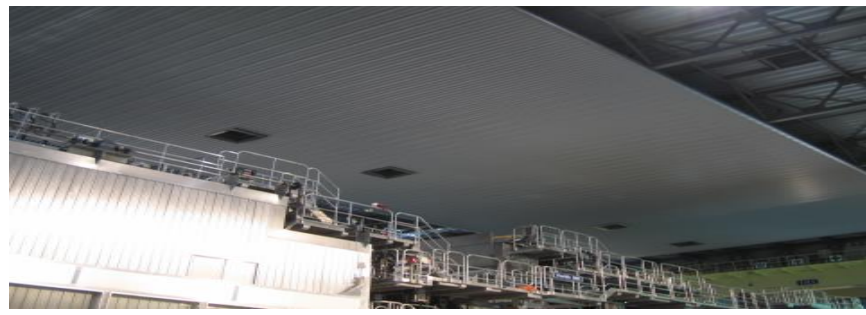
©2019. The contents of this presentation are the property of Enerquin Air Inc. No part of this presentation may be reproduced or transmitted in any form or by any means, electronic or mechanical, including photocopying, recording, or any information storage and retrieval system, without permission in writing from Enerquin Air Inc.



Overall Wet End Ventilation

**WET END & PRESS SECTION AIR SYSTEMS**  
**A comprehensive approach to control mist and ensure machine cleanliness**

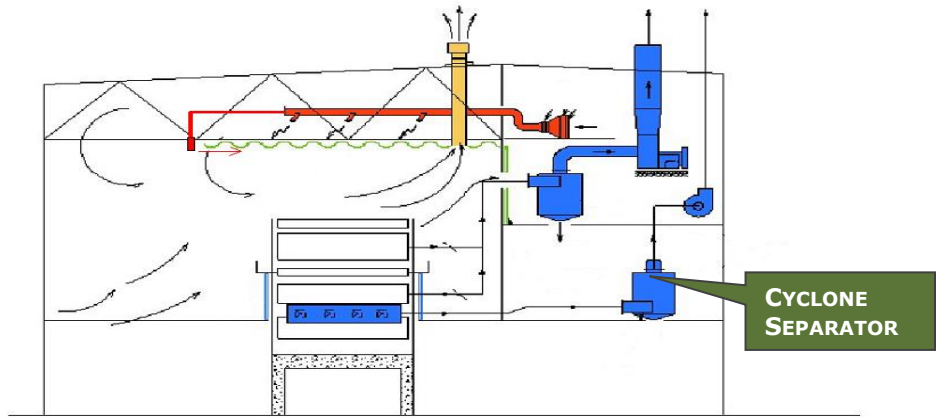
**False Ceiling system** protects building structure and avoid dripping



## TYPICAL VERTICAL SEPARATORS



## TYPICAL HORIZONTAL SEPARATOR



Overall Wet End Ventilation

©2019. The contents of this presentation are the property of Enerquin Air Inc. No part of this presentation may be reproduced or transmitted in any form or by any means, electronic or mechanical, including photocopying, recording, or any information storage and retrieval system, without permission in writing from Enerquin Air Inc.

**Exhaust capacity:** 200 to 600 CFM per inch of wire width. Depends on:

- BW
- Machine speed
- Former
- Stock temperature
- Type of former → Typical average capacity VS type of former:
  - Fourdrinier : 350 CFM / in. trim
  - Twin wire : 425 to 550 CFM / in. trim

## Exhaust Fan

- Centrifugal Backward Incline (BI) wheel or radial blade wheel
- Axial wheel type not recommended

## Water/Fiber removal device:

- Baffle type
- In-line type (spin eliminator)
- Cyclonic Type (inlet perpendicular to outlet)
  - Vertical or Horizontal

## Cross-machine exhaust ducts





©2019. The contents of this presentation are the property of Enerquin Air Inc. No part of this presentation may be reproduced or transmitted in any form or by any means, electronic or mechanical, including photocopying, recording, or any information storage and retrieval system, without permission in writing from Enerquin Air Inc.



©2019. The contents of this presentation are the property of Enerquin Air Inc. No part of this presentation may be reproduced or transmitted in any form or by any means, electronic or mechanical, including photocopying, recording, or any information storage and retrieval system, without permission in writing from Enerquin Air Inc.



©2019. The contents of this presentation are the property of Enerquin Air Inc. No part of this presentation may be reproduced or transmitted in any form or by any means, electronic or mechanical, including photocopying, recording, or any information storage and retrieval system, without permission in writing from Enerquin Air Inc.



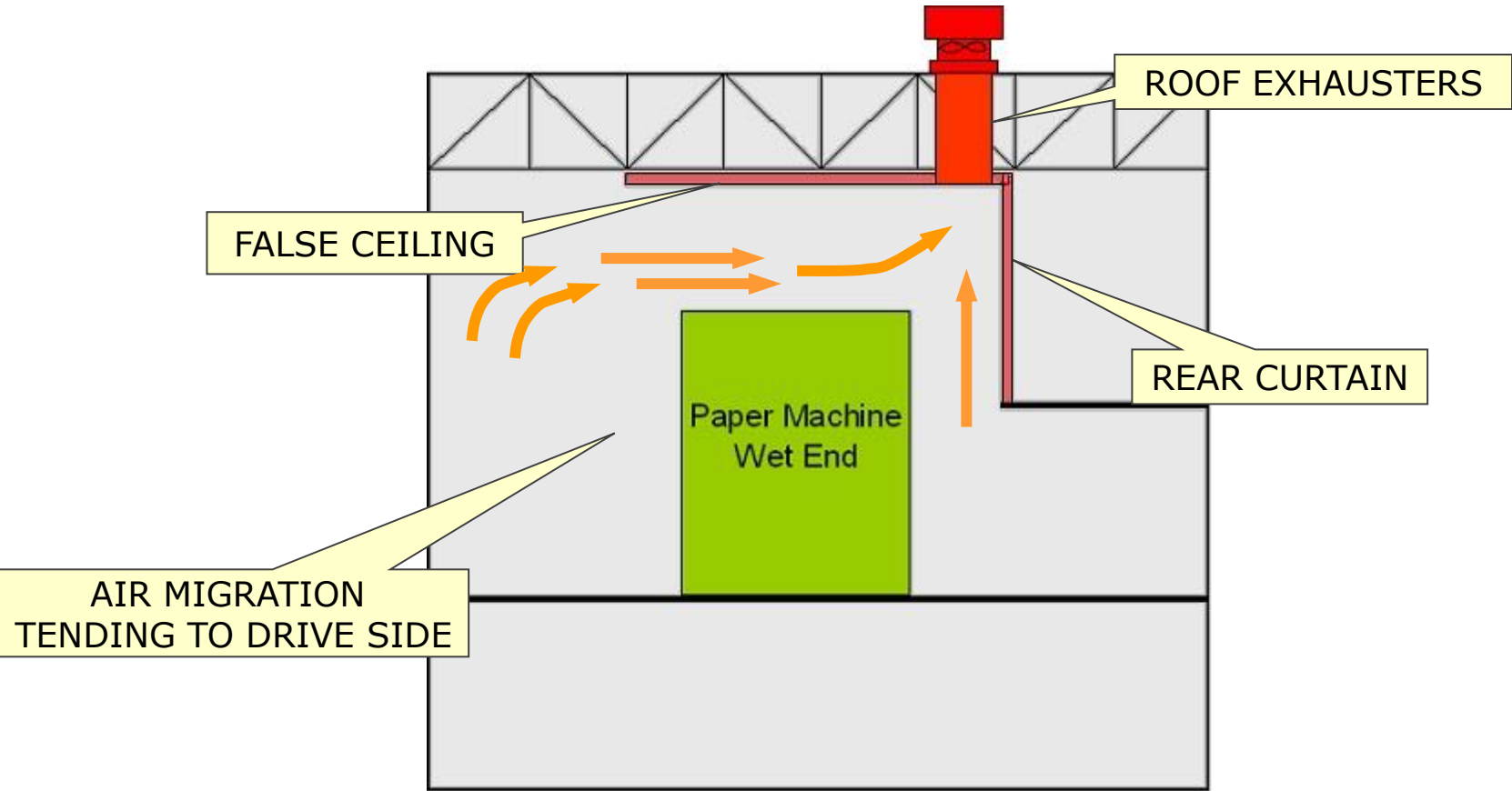
©2019. The contents of this presentation are the property of Enerquin Air Inc. No part of this presentation may be reproduced or transmitted in any form or by any means, electronic or mechanical, including photocopying, recording, or any information storage and retrieval system, without permission in writing from Enerquin Air Inc.

## ▶ Roof Exhausters

- Extract air from underneath the false ceiling at the backside

## ▶ WE Roof Supply

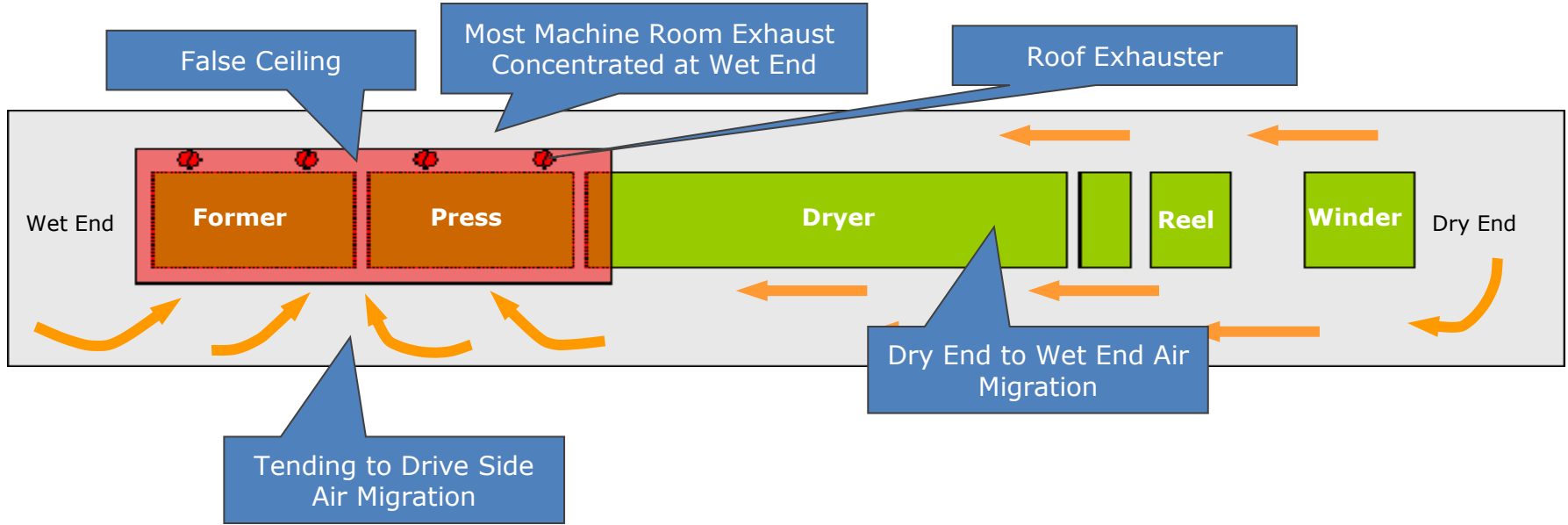
- Hot air supplied between building roof and false ceiling
- This area must be kept under positive pressure
- Air temperature > Stock temperature



©2019. The contents of this presentation are the property of Enerquin Air Inc. No part of this presentation may be reproduced or transmitted in any form or by any means, electronic or mechanical, including photocopying, recording, or any information storage and retrieval system, without permission in writing from Enerquin Air Inc.



©2019. The contents of this presentation are the property of Enerquin Air Inc. No part of this presentation may be reproduced or transmitted in any form or by any means, electronic or mechanical, including photocopying, recording, or any information storage and retrieval system, without permission in writing from Enerquin Air Inc.



©2019. The contents of this presentation are the property of Enerquin Air Inc. No part of this presentation may be reproduced or transmitted in any form or by any means, electronic or mechanical, including photocopying, recording, or any information storage and retrieval system, without permission in writing from Enerquin Air Inc.



$$\text{Air Balance} = \frac{\text{Air Mass Supply (\# D. A./min)}}{\text{Air Mass Exhaust (\#D. A./min)}}$$

**Target Air Balance**

Summer: 65% to 75%  
Winter: 90% to 100%

**Recommended Air Change Rate (a/c)**

Summer: 8 to 10  
Winter: 6 to 8  
Wet End: 35 to 55

- greater than overall building A/C rate to promote DE to WE air flow
- slightly lower in winter
- varies according to machine room layout, production, type of former, etc.

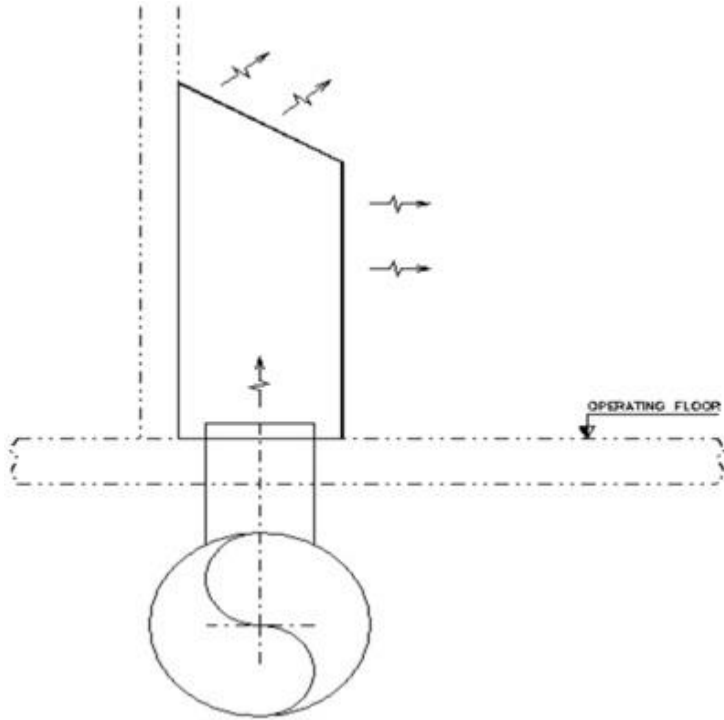
©2019. The contents of this presentation are the property of Enerquin Air Inc. No part of this presentation may be reproduced or transmitted in any form or by any means, electronic or mechanical, including photocopying, recording, or any information storage and retrieval system, without permission in writing from Enerquin Air Inc.

## Enerquin Air Make-up Air Flow Distribution Concept

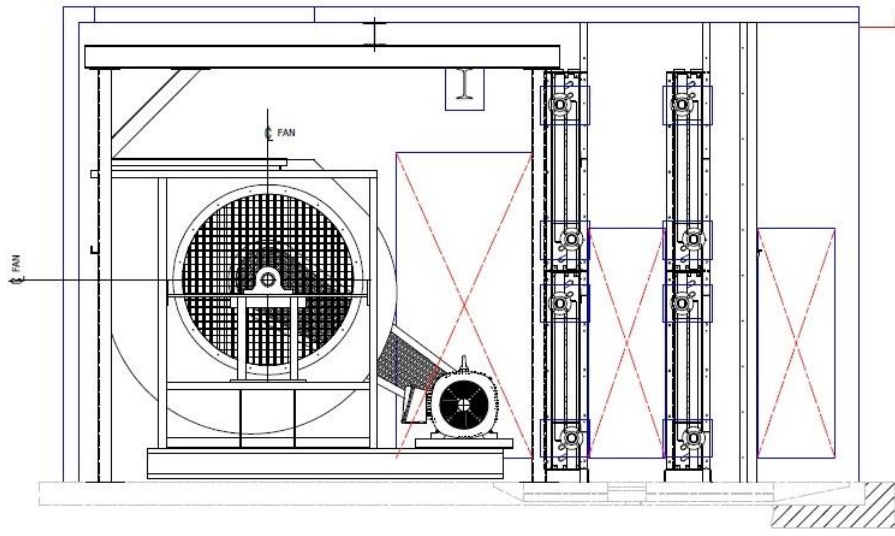
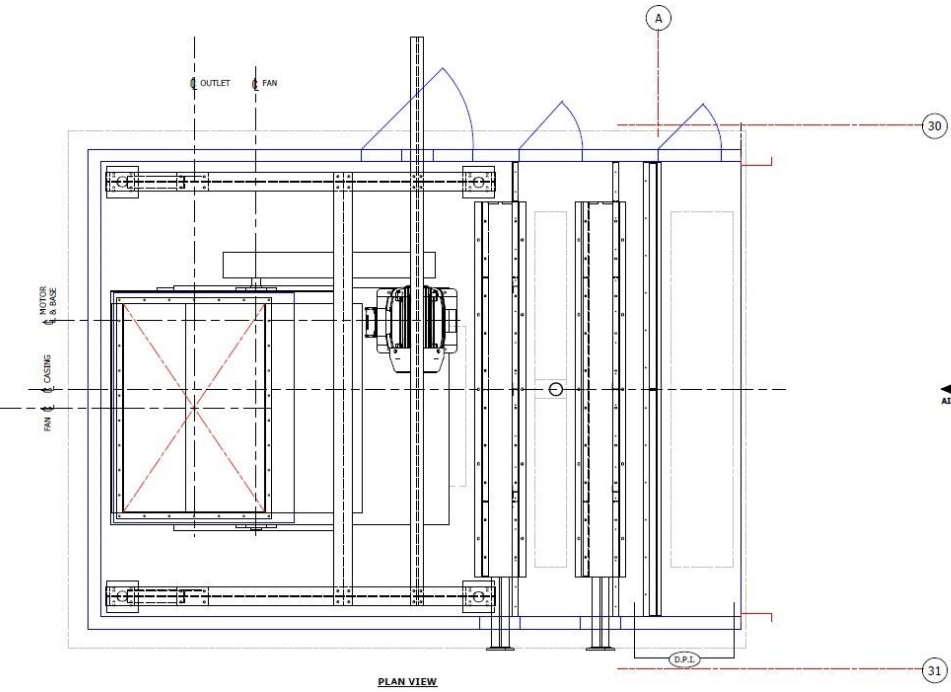
- **Provide proper fresh air distribution to promote desirable air movement:**
  - Air migration from the DE to the WE of the machine room.
  - Air migration from lower elevation to upper elevation
  - Air migration from tending side to backside of the P.M.
  
- **The fresh air distribution should generally be distributed as follows:**
  - 40% on the operating floor at tending side aisle
  - 15% on the back side of the operating floor
  - 25% on the basement floor
  - 10% in specific working areas such as winder areas, etc.
  - 10% on the extreme W.E. wall

©2019. The contents of this presentation are the property of Enerquin Air Inc. No part of this presentation may be reproduced or transmitted in any form or by any means, electronic or mechanical, including photocopying, recording, or any information storage and retrieval system, without permission in writing from Enerquin Air Inc.

## **Building ventilation supply plenum**



- **Typically used on tending side, operating floor level**
- **Normally recessed between building columns**
- **Equipped with distribution grilles or fabricated from perforated metal for even distribution**



©2019. The contents of this presentation are the property of Enerquin Air Inc. No part of this presentation may be reproduced or transmitted in any form or by any means, electronic or mechanical, including photocopying, recording, or any information storage and retrieval system, without permission in writing from Enerquin Air Inc.



©2019. The contents of this presentation are the property of Enerquin Air Inc. No part of this presentation may be reproduced or transmitted in any form or by any means, electronic or mechanical, including photocopying, recording, or any information storage and retrieval system, without permission in writing from Enerquin Air Inc.



©2019. The contents of this presentation are the property of Enerquin Air Inc. No part of this presentation may be reproduced or transmitted in any form or by any means, electronic or mechanical, including photocopying, recording, or any information storage and retrieval system, without permission in writing from Enerquin Air Inc.

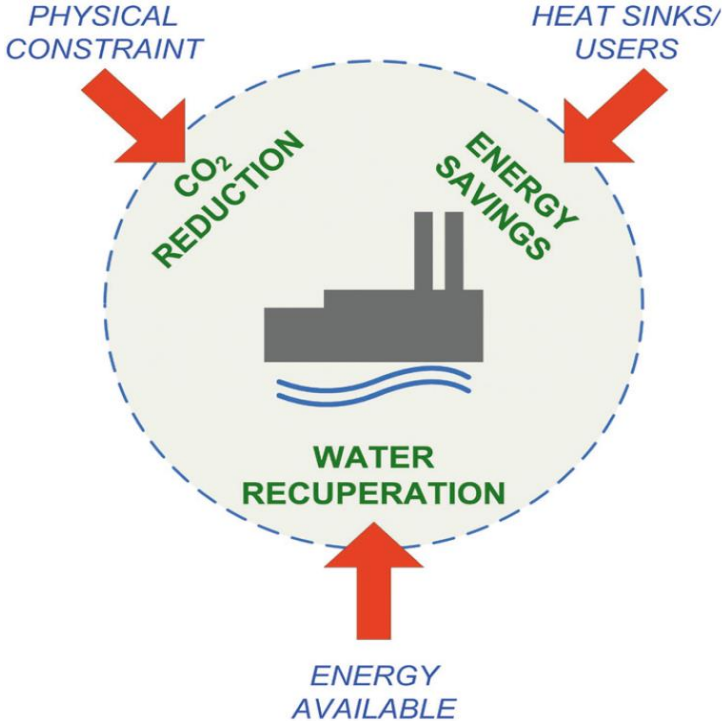
**Objectives**

- Complete analysis of the building ventilation condition;
- Identify economically-viable potential sources of heat recovery;
- Build a maintenance punch list to re-establish ventilation system capacity;
- Overall paper machine building air balance for winter and summer modes;
- Determine PM building air changes per hour;
- Determine PM Wet End air changes per hour.
- Evaluate the general condition of all the air system equipment;
- Determine efficiency and performance of each air system and fan;

**Procedure:**

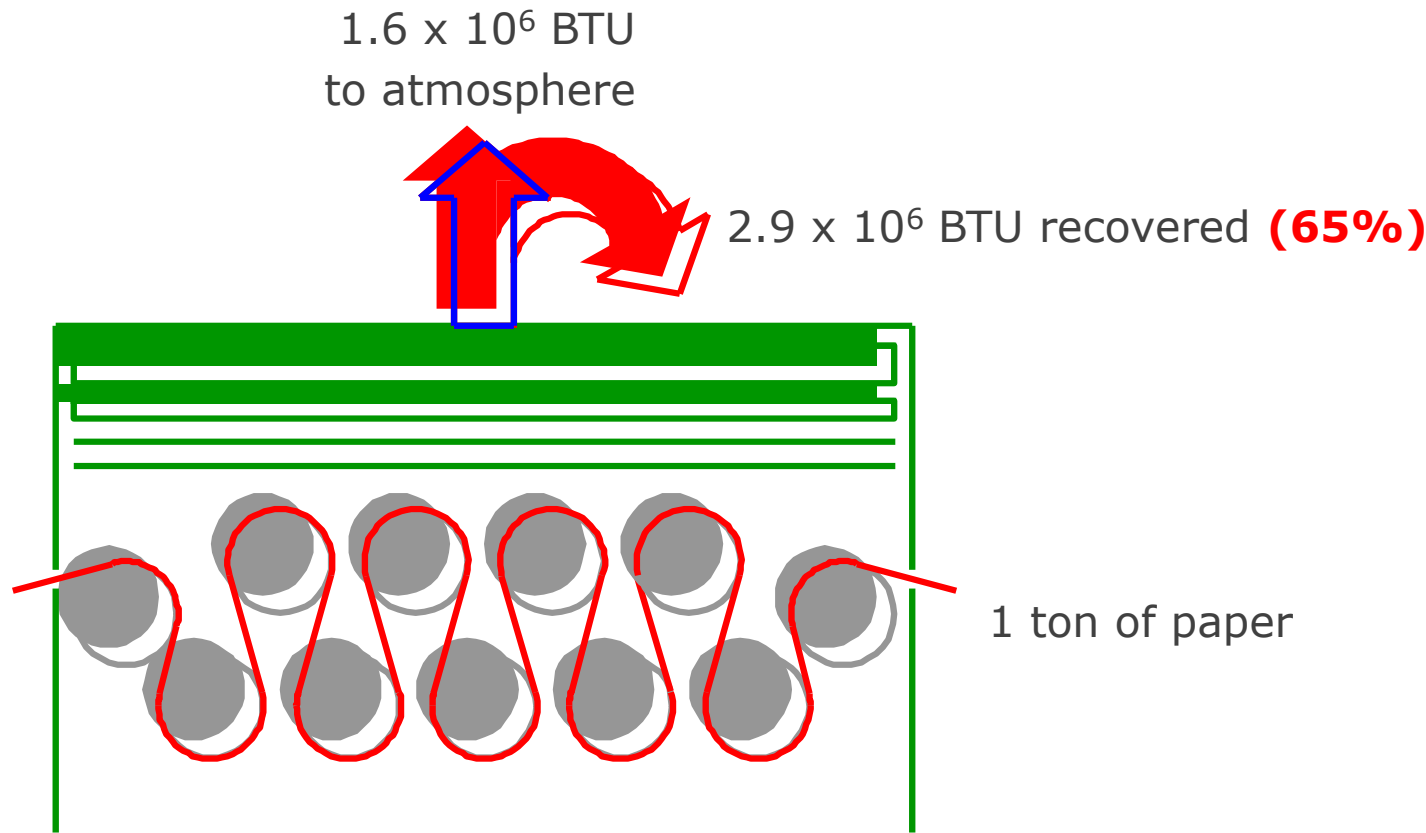
- Measure all air flow supplied to the building with corresponding temperatures (dry bulb & wet bulb);
- Measure all air flow exhausted to the atmosphere, including process exhaust systems, with corresponding temperatures (dry & wet bulb);
- Measure floor temperature at different locations and elevations throughout the building;
- Identify sources of air infiltration into the building (wall openings and open doors, etc.)

Each heat recovery application is unique and requires a specific analysis to identify and qualify the available heat sources, heat sinks and the best way to maximize the energy transfer while minimizing the capital investment. Further benefits include CO<sub>2</sub> reductions and recovered water.



©2019. The contents of this presentation are the property of Enerquin Air Inc. No part of this presentation may be reproduced or transmitted in any form or by any means, electronic or mechanical, including photocopying, recording, or any information storage and retrieval system, without permission in writing from Enerquin Air Inc.



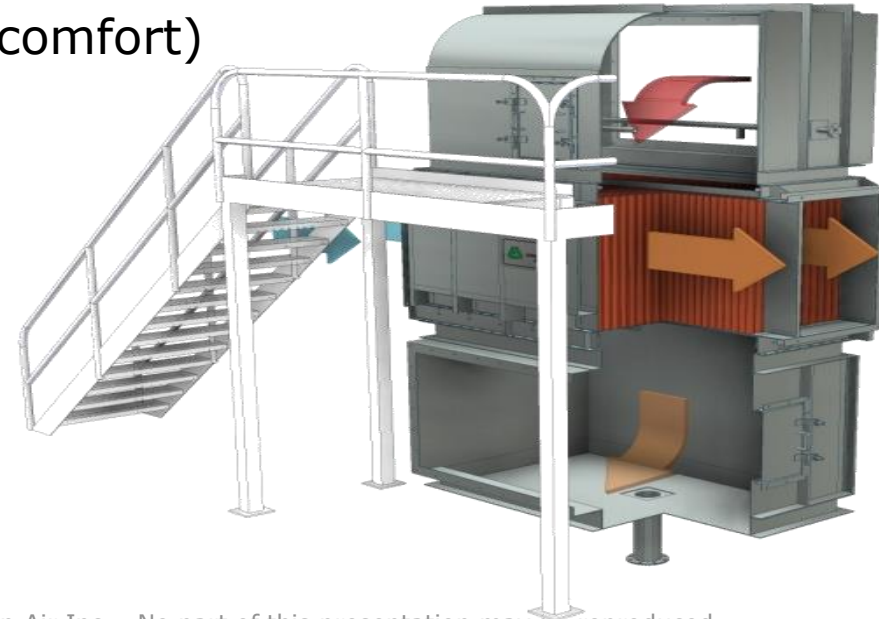


©2019. The contents of this presentation are the property of Enerquin Air Inc. No part of this presentation may be reproduced or transmitted in any form or by any means, electronic or mechanical, including photocopying, recording, or any information storage and retrieval system, without permission in writing from Enerquin Air Inc.

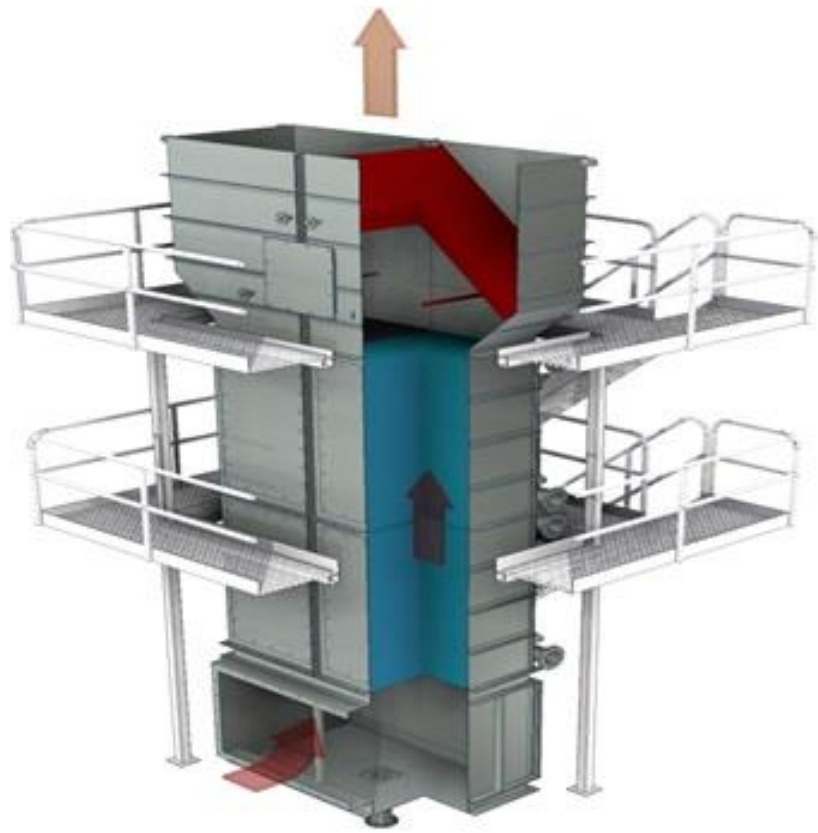
## Recovers **sensible heat (Dry HRU)**

Pre-heating of **building ventilation air**:

- Running only during winter
- Temperature rise limited (Personnel comfort)



©2019. The contents of this presentation are the property of Enerquin Air Inc. No part of this presentation may be reproduced or transmitted in any form or by any means, electronic or mechanical, including photocopying, recording, or any information storage and retrieval system, without permission in writing from Enerquin Air Inc.



- Indirect type, no contact with contaminated air stream
- Applications:
  - Process & fresh water
  - Glycol solution & Thermo-fluids
- Wide gap plate design; minimize fouling
- *100 psig operating pressure*
- Cleaning showers reduces maintenance requirement

©2019. The contents of this presentation are the property of Enerquin Air Inc. No part of this presentation may be reproduced or transmitted in any form or by any means, electronic or mechanical, including photocopying, recording, or any information storage and retrieval system, without permission in writing from Enerquin Air Inc.

## Design Considerations:

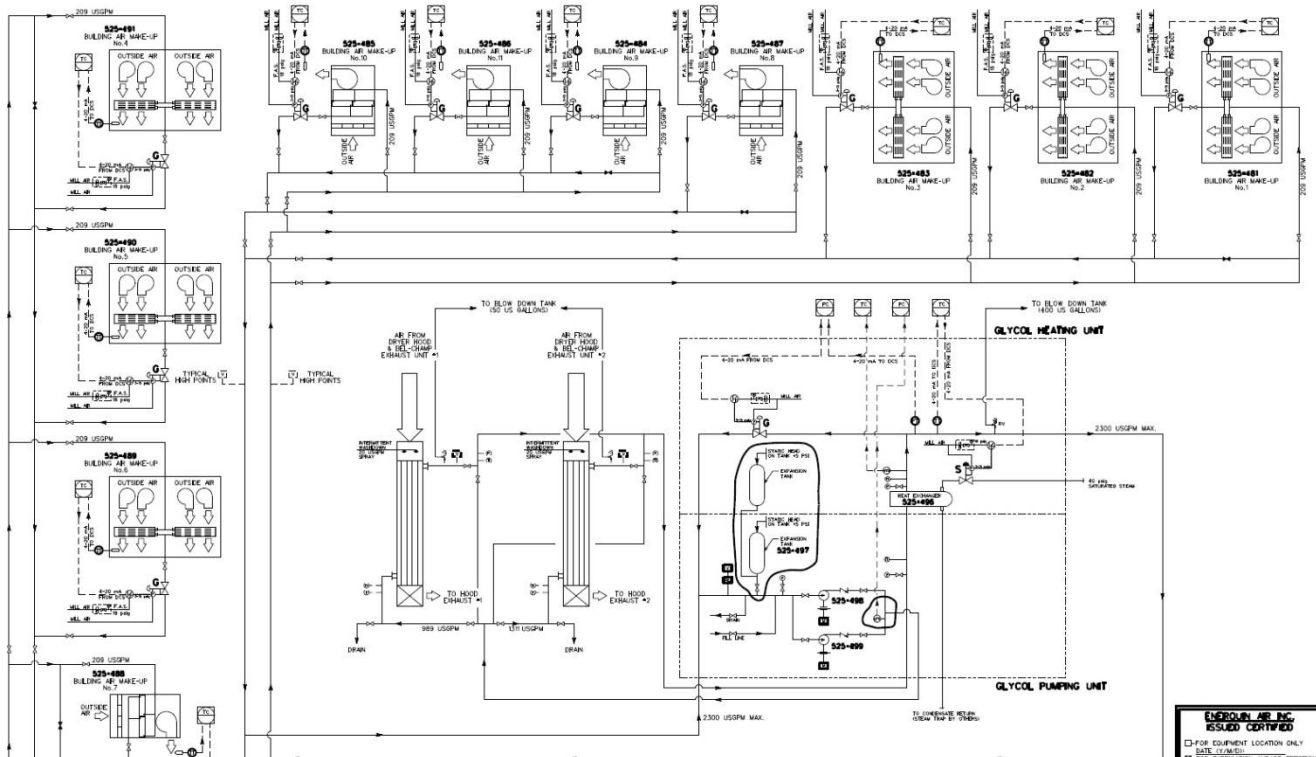
- Used for Wet Exchange only
- Maximum glycol/thermal oil temperature
- Typically  $U = 70$  to  $100 \text{ btu/hr-ft}^2\text{-}^\circ\text{Fr}$
- Try to maintain exhaust velocity  $\geq 2000 \text{ fpm}$
- Try to keep plate spacing  $\geq 1\frac{1}{4} \text{ in.}$
- Use counterflow arrangement
  - Ideally liquid flows up
  - Exhaust air goes down
- Provide cleaning spray nozzles on top
- Provide hinged access panel for maintenance
- Maximize plate length to optimize cost
- Requires water eliminator section after plates



©2019. The contents of this presentation are the property of Enerquin Air Inc. No part of this presentation may be reproduced or transmitted in any form or by any means, electronic or mechanical, including photocopying, recording, or any information storage and retrieval system, without permission in writing from Enerquin Air Inc.



©2019. The contents of this presentation are the property of Enerquin Air Inc. No part of this presentation may be reproduced or transmitted in any form or by any means, electronic or mechanical, including photocopying, recording, or any information storage and retrieval system, without permission in writing from Enerquin Air Inc.



**ENERQUIN AIR INC.**  
ISSUED / CERTIFIED

□ FOR EQUIPMENT LOCATION ONLY  
DATE: 11/20/19

⊗ FOR P&ID LOCATION AND/OR DIRECTION  
DATE: 11/20/19

REV. 11/20/19

Filter	ENERQUIN	0-1	Isolating or Manual In-Phase Valve	ENERQUIN	0	Temperature Indicator	ENERQUIN	0	Flow Switch	ENERQUIN	L-1	Relief Valve	ENERQUIN
Recirculating Coil	ENERQUIN	0-1	Isolating or Manual In-Phase Valve (Normally Open)	ENERQUIN	0	Temperature Indicator	ENERQUIN	0	High Temperature Switch	ENERQUIN	L-1	Relief Valve	ENERQUIN
Recirculating Coil	ENERQUIN	0-1	Isolating or Manual In-Phase Valve (Normally Closed)	ENERQUIN	0	Pressure Transmitter	ENERQUIN	0	Air Elevator	ENERQUIN	0	Low Pressure Switch	ENERQUIN
Mist	ENERQUIN	0	Washdown Spray	ENERQUIN	0	Pressure Indicator	ENERQUIN	0	Automatic Air Vent	ENERQUIN	0		ENERQUIN
Pressure Transmitter	ENERQUIN	0	Temperature Transmitter	ENERQUIN	0	Pressure Indicator	ENERQUIN	0	Automatic Air Vent	ENERQUIN	0		ENERQUIN
Temperature Sensor	ENERQUIN	0	Temperature Sensor	ENERQUIN	0	Electro-Pneumatic Transducer	ENERQUIN	0	Swing Check Valve	ENERQUIN	0		ENERQUIN

©2019. The contents of this presentation are the property of Enerquin Air Inc. No part of this presentation may be reproduced or transmitted in any form or by any means, electronic or mechanical, including photocopying, recording, or any information storage and retrieval system, without permission in writing from Enerquin Air Inc.



©2019. The contents of this presentation are the property of Enerquin Air Inc. No part of this presentation may be reproduced or transmitted in any form or by any means, electronic or mechanical, including photocopying, recording, or any information storage and retrieval system, without permission in writing from Enerquin Air Inc.

**The amount/type of dust produced depends on**

- Product type
- Machine speed

**The problem with dust buildup**

- Finished product quality
- Fire hazard
- Maintenance/cleaning



### **Enerquin Air Machine Room Ventilation Concept**

- Proper distribution of make-up air between operating floor, mezzanine and basement promoting desirable air migration.
- Pressurize basement
- Pressurize mezzanine (where mechanical systems are) to prevent dust from migrating there
- Pressurize false ceiling

### **Air Movement:**

Supply and building exhaust airflows designed and balanced such that there will be no cross flow along the length of machine

- ❖ Wet humid air will not travel to dry end and vice versa
- ❖ Minimize paper dust dispersion from the dry end area (even with dust collection system, dust will be present)

©2019. The contents of this presentation are the property of Enerquin Air Inc. No part of this presentation may be reproduced or transmitted in any form or by any means, electronic or mechanical, including photocopying, recording, or any information storage and retrieval system, without permission in writing from Enerquin Air Inc.

## Makeup air flow distribution:

### ➤ Basement

- ~15% to 20% of total supply
- Ductwork

### ➤ Operating Floor

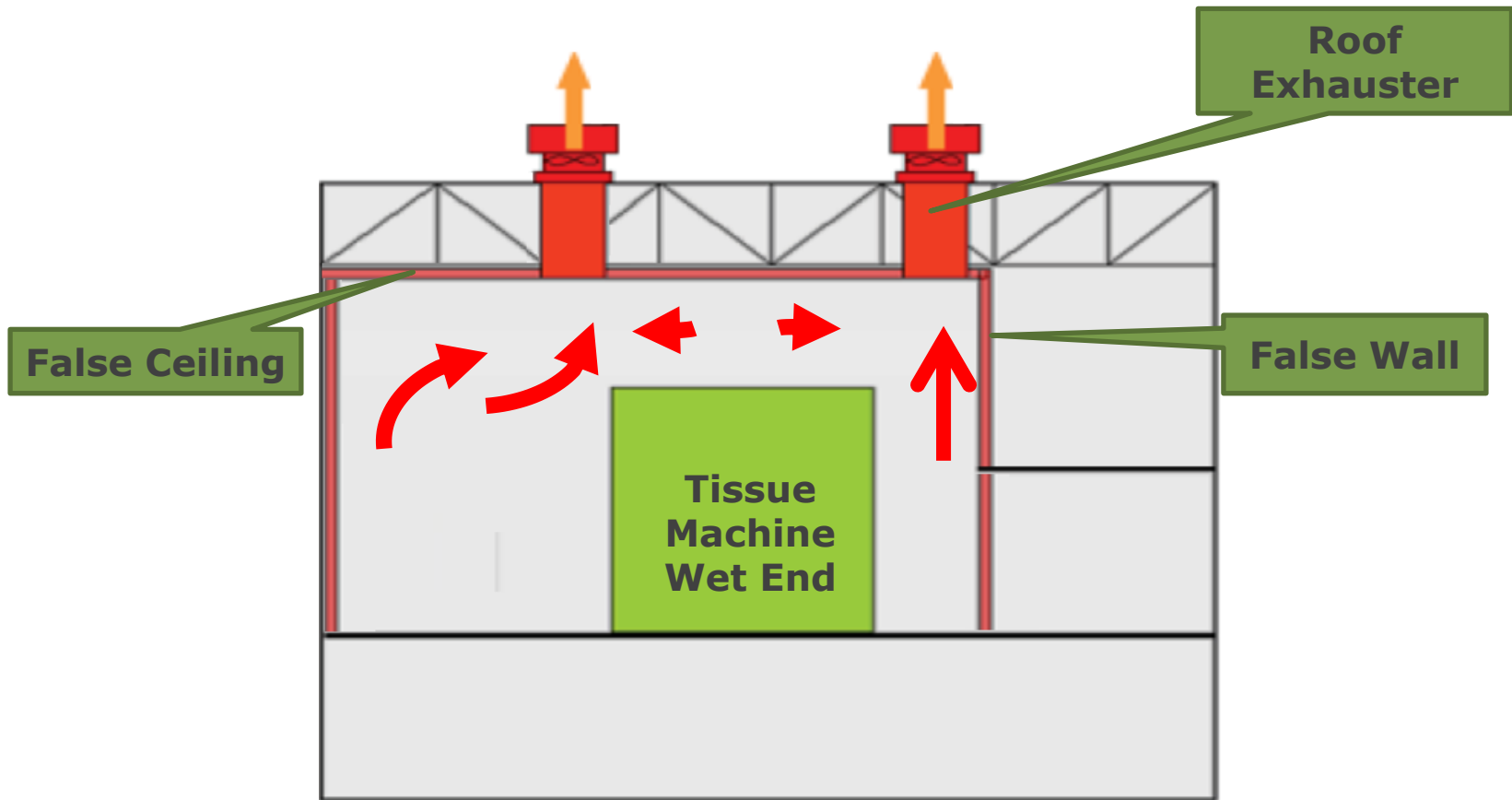
- ~60% to 65% of total supply
- Wall plenum at floor level around perimeter of machine room

### ➤ Mezzanine

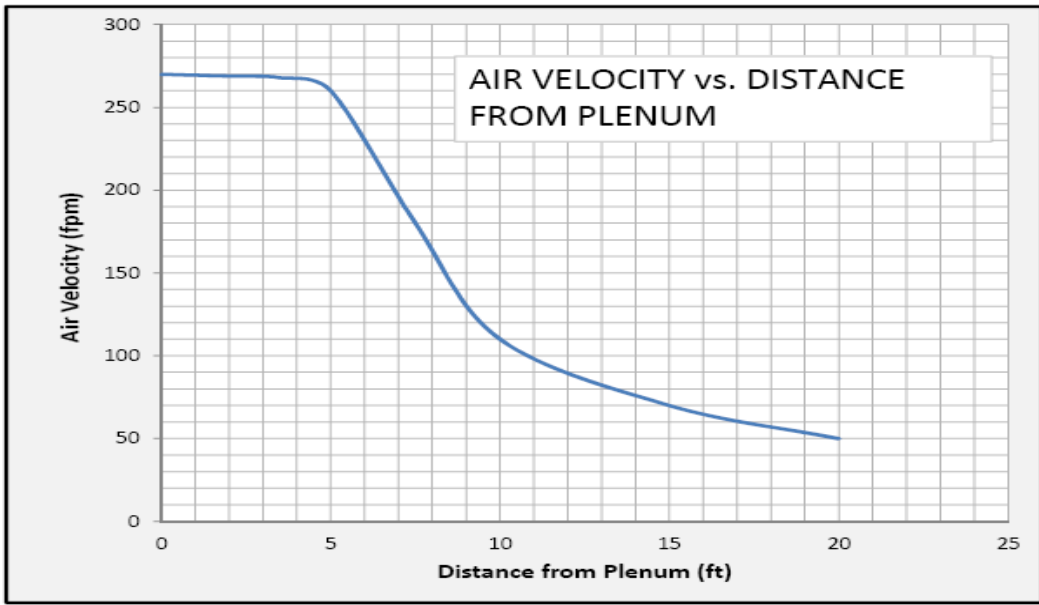
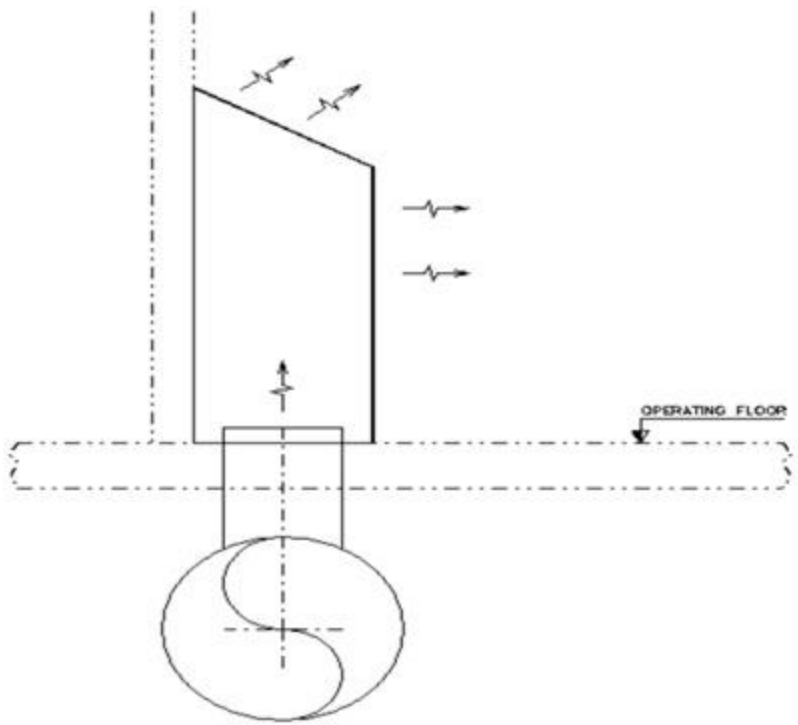
- ~20% of total supply
- Ductwork

**False Ceiling:** From wet end to the dry end of TM room

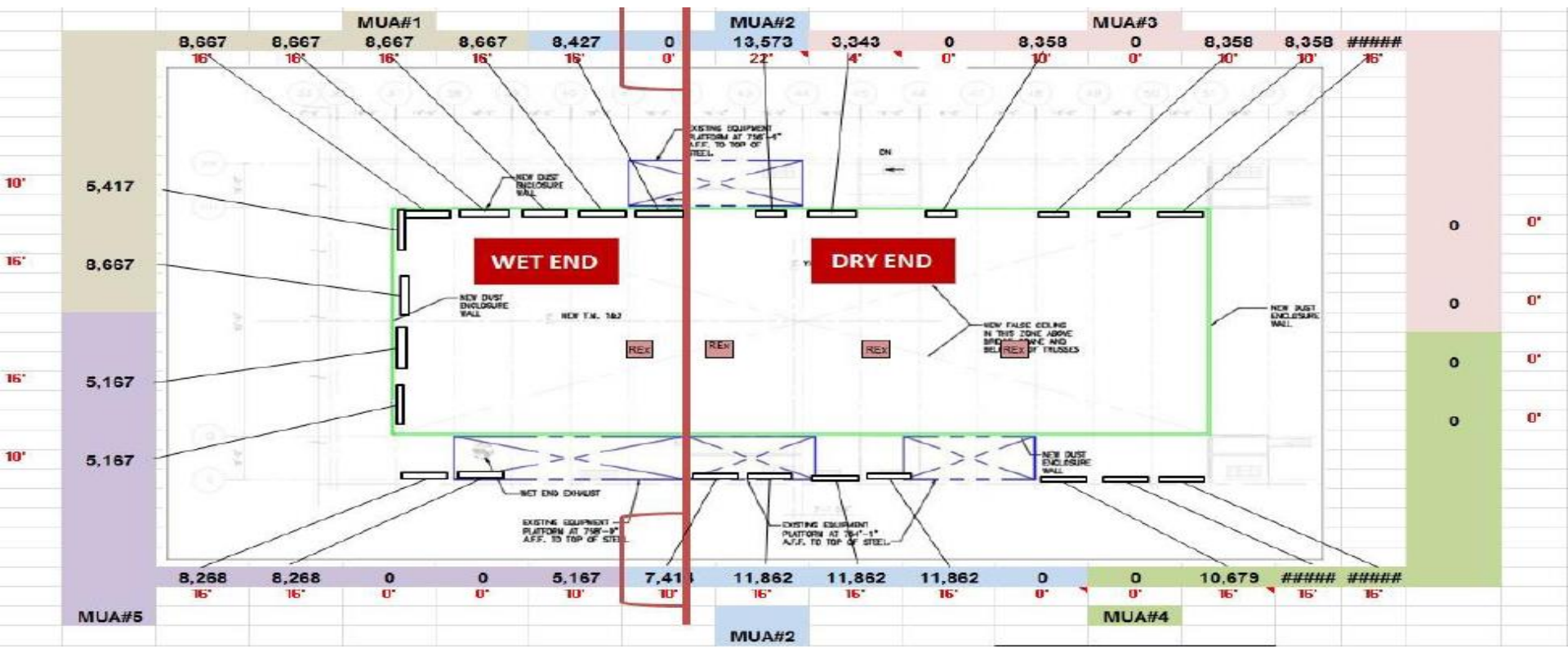
**False Wall:** From operating floor to ceiling on complete perimeter of building



©2019. The contents of this presentation are the property of Enerquin Air Inc. No part of this presentation may be reproduced or transmitted in any form or by any means, electronic or mechanical, including photocopying, recording, or any information storage and retrieval system, without permission in writing from Enerquin Air Inc.



©2019. The contents of this presentation are the property of Enerquin Air Inc. No part of this presentation may be reproduced or transmitted in any form or by any means, electronic or mechanical, including photocopying, recording, or any information storage and retrieval system, without permission in writing from Enerquin Air Inc.



©2019. The contents of this presentation are the property of Enerquin Air Inc. No part of this presentation may be reproduced or transmitted in any form or by any means, electronic or mechanical, including photocopying, recording, or any information storage and retrieval system, without permission in writing from Enerquin Air Inc.

# **Best Practices for Keeping Machine Rooms Clean**

- Strategic location of dust removal equipment + maintain equipment
- Strategic location of building exhaust fans + maintain equipment
- Pressurize certain regions in machine room to prevent dust from migrating there
- Balance Dry End and Wet End pressure to reduce dust migration within the building

## Case Studies

©2019. The contents of this presentation are the property of Enerquin Air Inc. No part of this presentation may be reproduced or transmitted in any form or by any means, electronic or mechanical, including photocopying, recording, or any information storage and retrieval system, without permission in writing from Enerquin Air Inc.



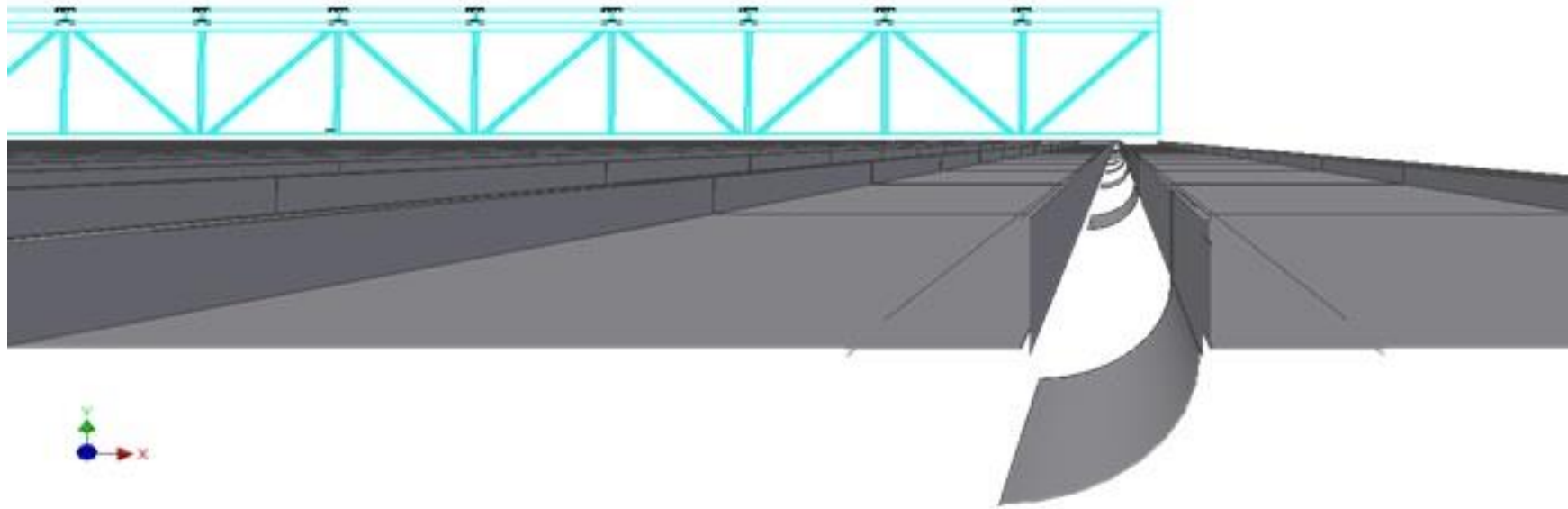
**Problem:**

- Preliminary degradation of machine room roof trusses at Wet End
- Fires

**Solution:**

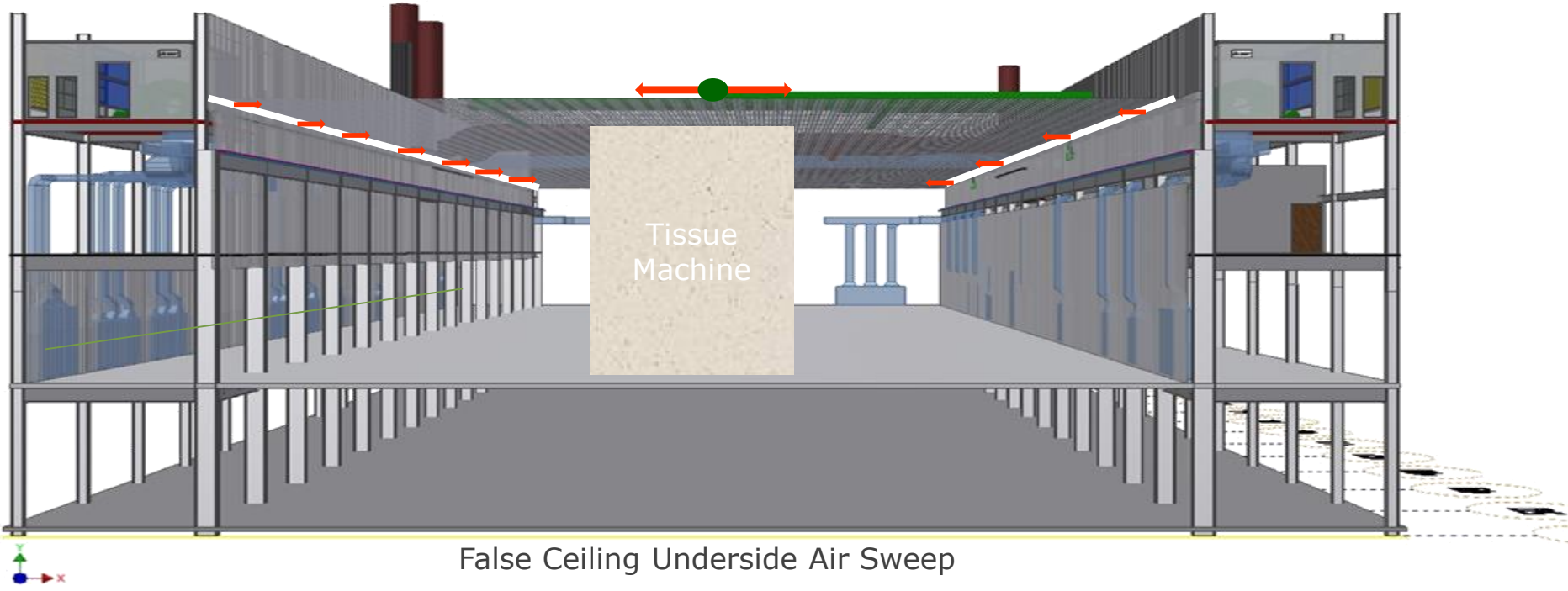
- Installation of false ceiling c/w:
  - Roof supply system
  - Air sweep deflectors





Air Sweep Deflectors

©2019. The contents of this presentation are the property of Enerquin Air Inc. No part of this presentation may be reproduced or transmitted in any form or by any means, electronic or mechanical, including photocopying, recording, or any information storage and retrieval system, without permission in writing from Enerquin Air Inc.

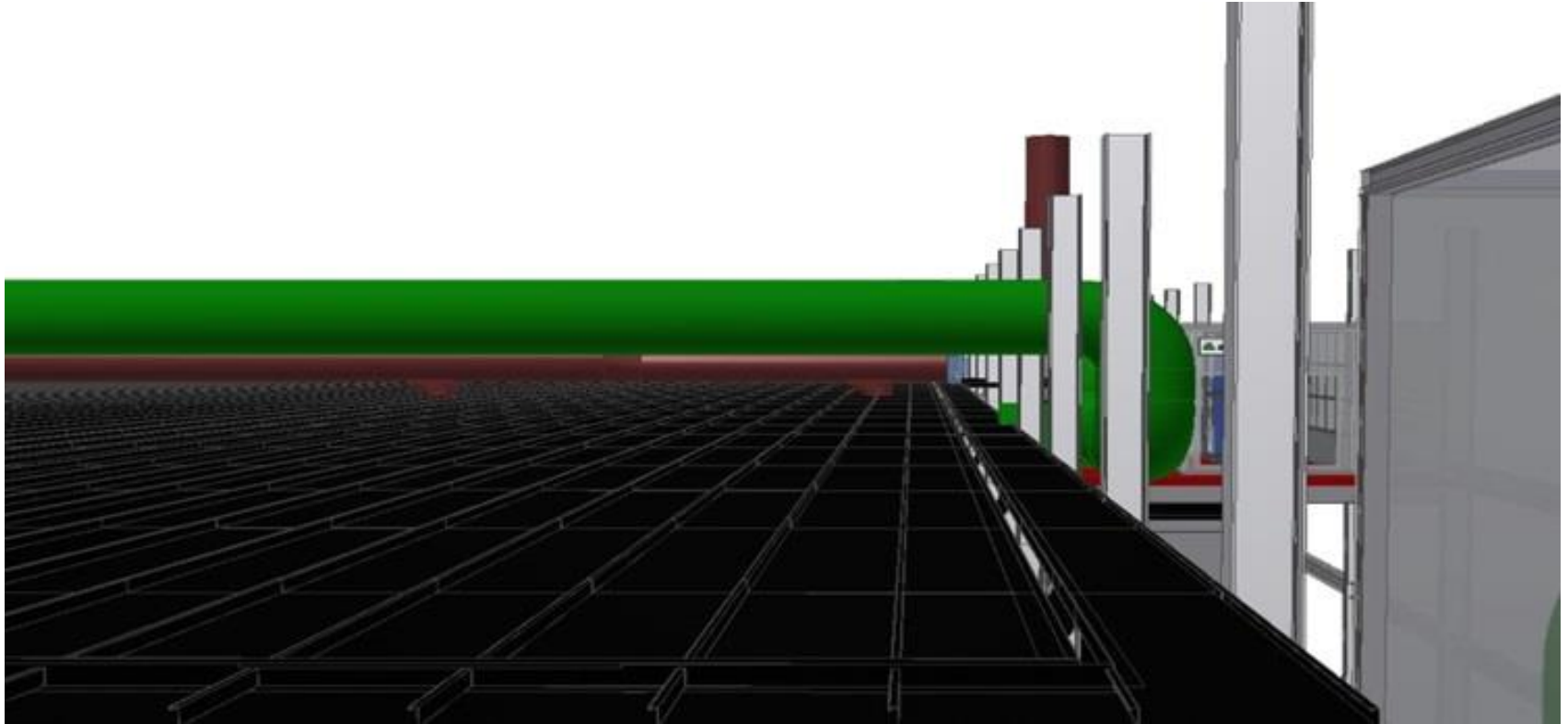


False Ceiling Underside Air Sweep

©2019. The contents of this presentation are the property of Enerquin Air Inc. No part of this presentation may be reproduced or transmitted in any form or by any means, electronic or mechanical, including photocopying, recording, or any information storage and retrieval system, without permission in writing from Enerquin Air Inc.

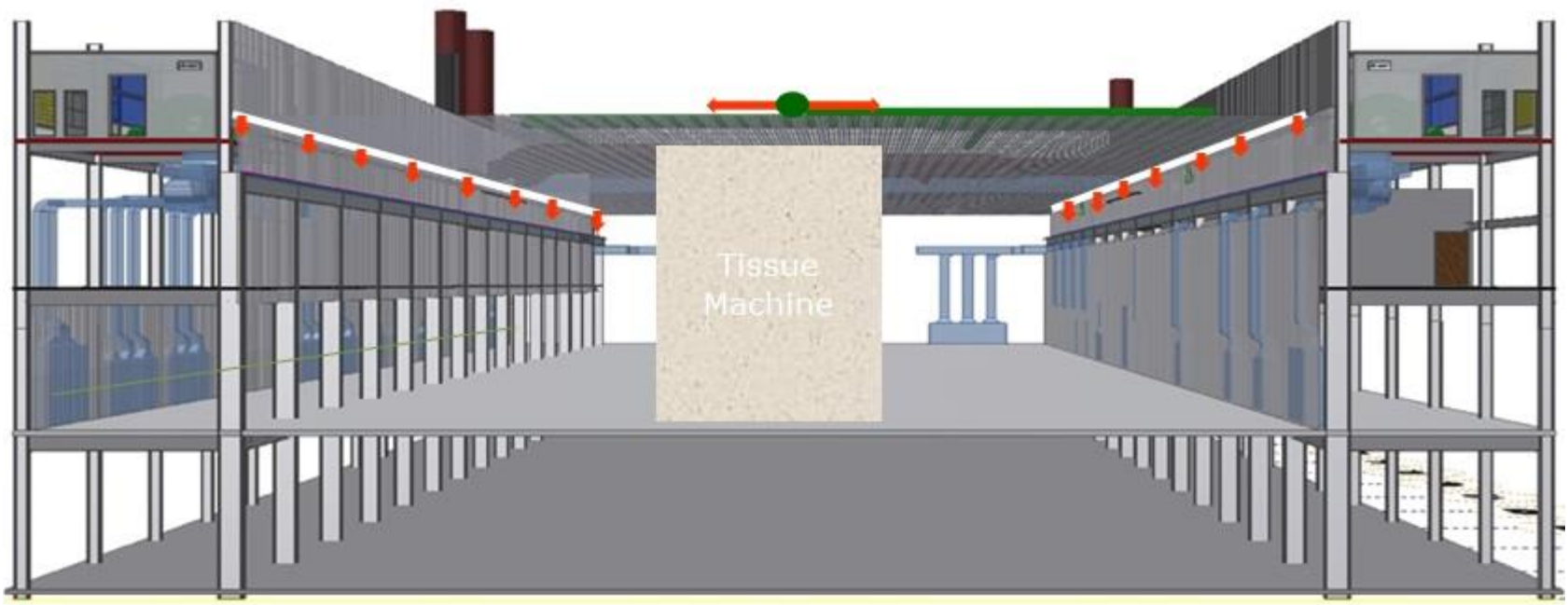


©2019. The contents of this presentation are the property of Enerquin Air Inc. No part of this presentation may be reproduced or transmitted in any form or by any means, electronic or mechanical, including photocopying, recording, or any information storage and retrieval system, without permission in writing from Enerquin Air Inc.



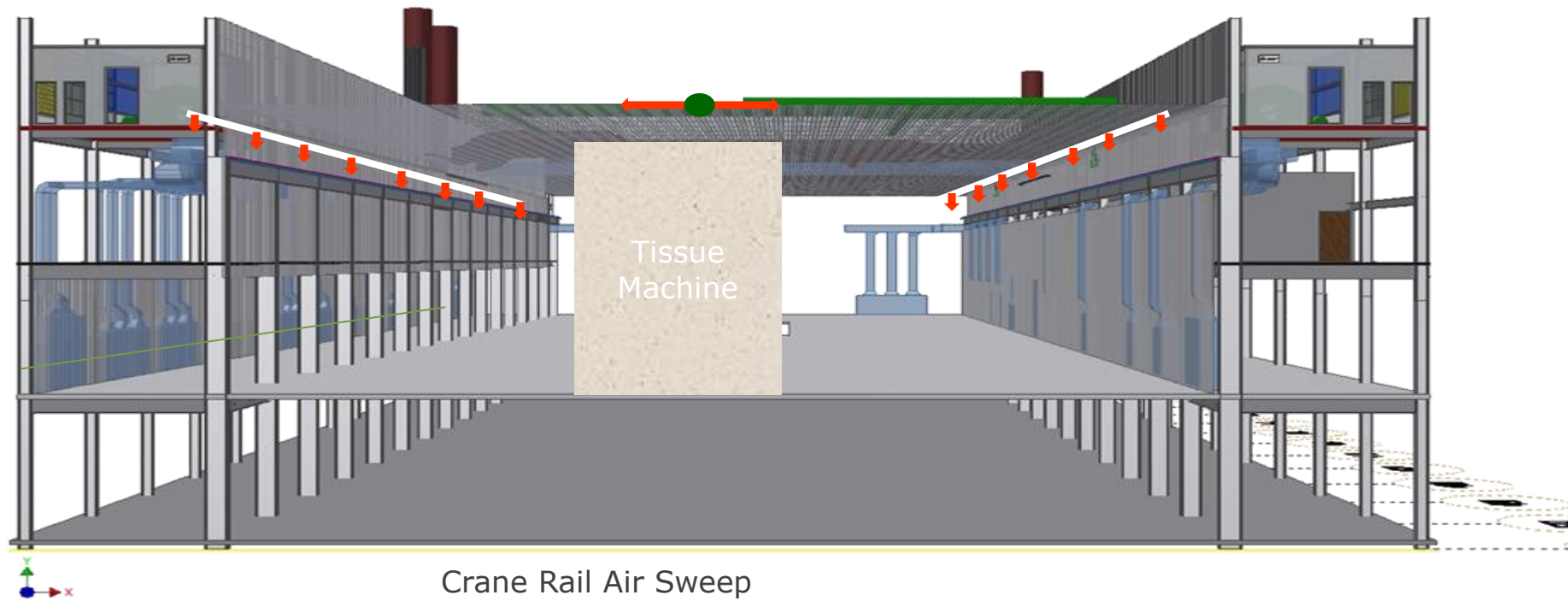
False Ceiling Peripheral Slots

©2019. The contents of this presentation are the property of Enerquin Air Inc. No part of this presentation may be reproduced or transmitted in any form or by any means, electronic or mechanical, including photocopying, recording, or any information storage and retrieval system, without permission in writing from Enerquin Air Inc.



False Ceiling Peripheral Slots

©2019. The contents of this presentation are the property of Enerquin Air Inc. No part of this presentation may be reproduced or transmitted in any form or by any means, electronic or mechanical, including photocopying, recording, or any information storage and retrieval system, without permission in writing from Enerquin Air Inc.



Crane Rail Air Sweep

©2019. The contents of this presentation are the property of Enerquin Air Inc. No part of this presentation may be reproduced or transmitted in any form or by any means, electronic or mechanical, including photocopying, recording, or any information storage and retrieval system, without permission in writing from Enerquin Air Inc.

## Problem/Background:

- Linerboard machine with closed hood
- Mill located in Southeast USA
- Extremely high operating floor temperatures/humidity reported (20 degrees greater than ambient)

Definition

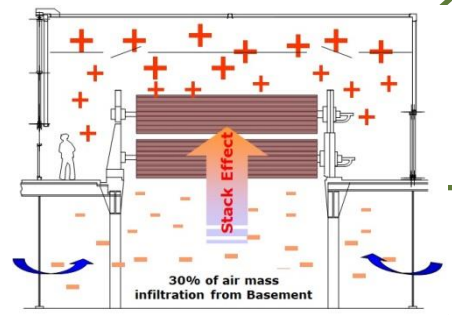
Ratio of supplied air mass vs. exhausted air mass

Recommended Air Balance

- Closed Hoods 65% to 75%
- Open Hoods 30% to 35%

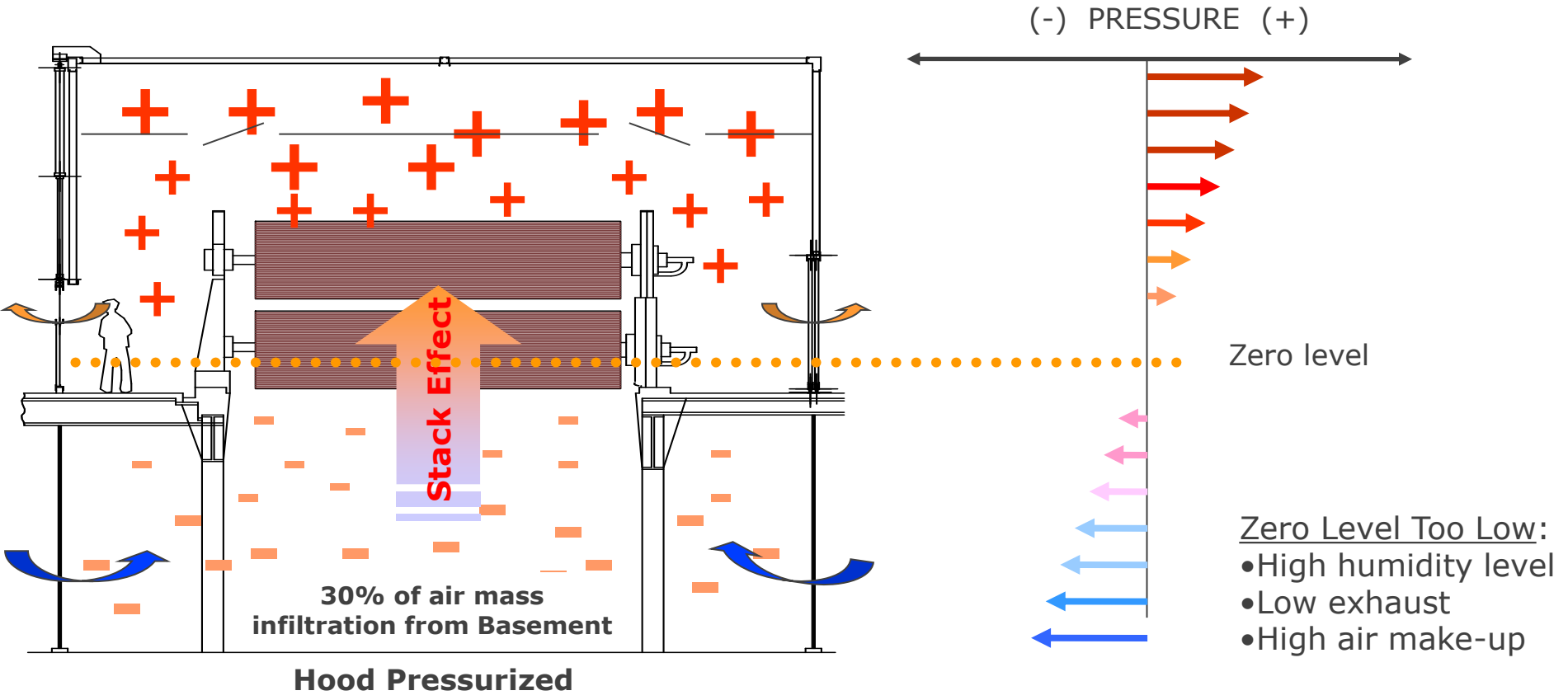
Proper Air Balance

Zero level at 7 ft above operating floor



- ✓ Efficient operation
- ✓ Reduce air exhaust requirements
- ✓ Reduce energy usage
- ✓ Contain water vapors without spilling or condensation
- ✓ Reduce uncontrolled air currents which have adverse effect on runnability





©2019. The contents of this presentation are the property of Enerquin Air Inc. No part of this presentation may be reproduced or transmitted in any form or by any means, electronic or mechanical, including photocopying, recording, or any information storage and retrieval system, without permission in writing from Enerquin Air Inc.

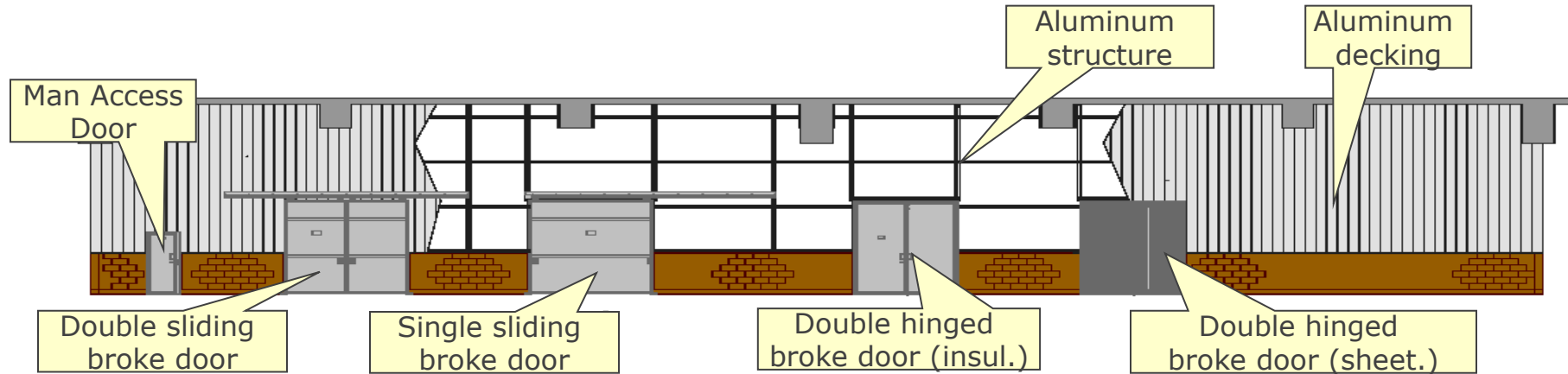
## Designed to work in conjunction with closed hood

- Minimize colder air infiltration
- Increase efficiency of the dryer section
- Ensure proper closed hood operation

**Accessibility:**  
Broke removable door options

- Double or single sliding
- Double hinged
- Roll-Up door

Man access doors



©2019. The contents of this presentation are the property of Enerquin Air Inc. No part of this presentation may be reproduced or transmitted in any form or by any means, electronic or mechanical, including photocopying, recording, or any information storage and retrieval system, without permission in writing from Enerquin Air Inc.



**Basement Enclosure Challenges**

©2019. The contents of this presentation are the property of Enerquin Air Inc. No part of this presentation may be reproduced or transmitted in any form or by any means, electronic or mechanical, including photocopying, recording, or any information storage and retrieval system, without permission in writing from Enerquin Air Inc.

## Results:

- 10F temperature drop on operating floor
- Typically, the goal is to be 5F greater than ambient, but this machine room had 2 machines.

## Problems:

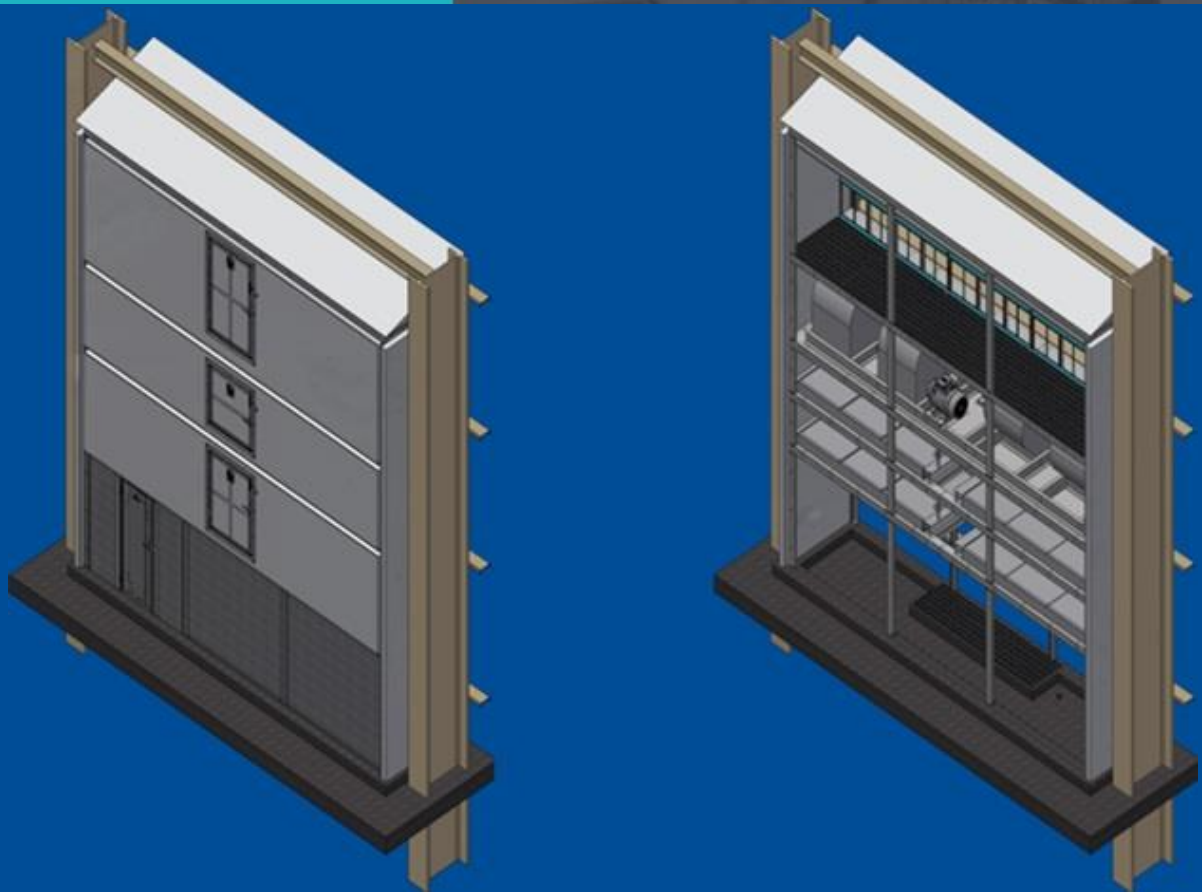
- Machine room was under a negative balance
- Additional exhaust from upgrade project increased building negative
- Limited space available outside building for requisite make-up units

## Solution:

- Installation of customized vertical make-up units (with no ductwork) between building columns

## Results:

- Raised building balance to industry-standard levels



©2019. The contents of this presentation are the property of Enerquin Air Inc. No part of this presentation may be reproduced or transmitted in any form or by any means, electronic or mechanical, including photocopying, recording, or any information storage and retrieval system, without permission in writing from Enerquin Air Inc.



**Conventional Outdoor Air Make-up Unit**

©2019. The contents of this presentation are the property of Enerquin Air Inc. No part of this presentation may be reproduced or transmitted in any form or by any means, electronic or mechanical, including photocopying, recording, or any information storage and retrieval system, without permission in writing from Enerquin Air Inc.

## Problem/Background:

- Mist around the forming area
- Condensation on building structure
- Fiber accumulation on machine
- Safety and maintenance issues
- Reduced machine Efficiency
- Dripping
- Deterioration
- Fogging during cold months



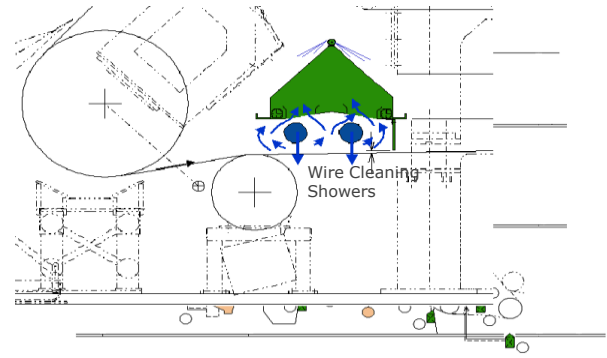
©2019. The contents of this presentation are the property of Enerquin Air Inc. No part of this presentation may be reproduced or transmitted in any form or by any means, electronic or mechanical, including photocopying, recording, or any information storage and retrieval system, without permission in writing from Enerquin Air Inc.



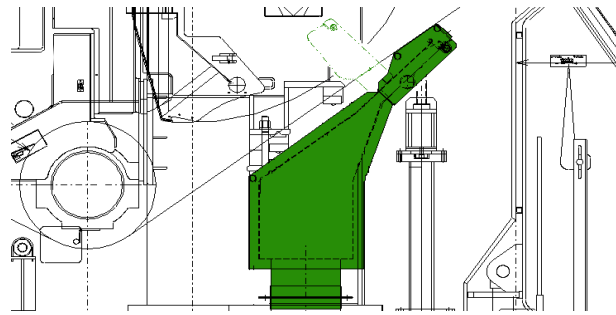
## Solution and Approach

- Exhaust mist efficiently (capture at source)
- Vapor not captured at the source requires 2x capacity to exhaust at false ceiling level

Inside wire loop

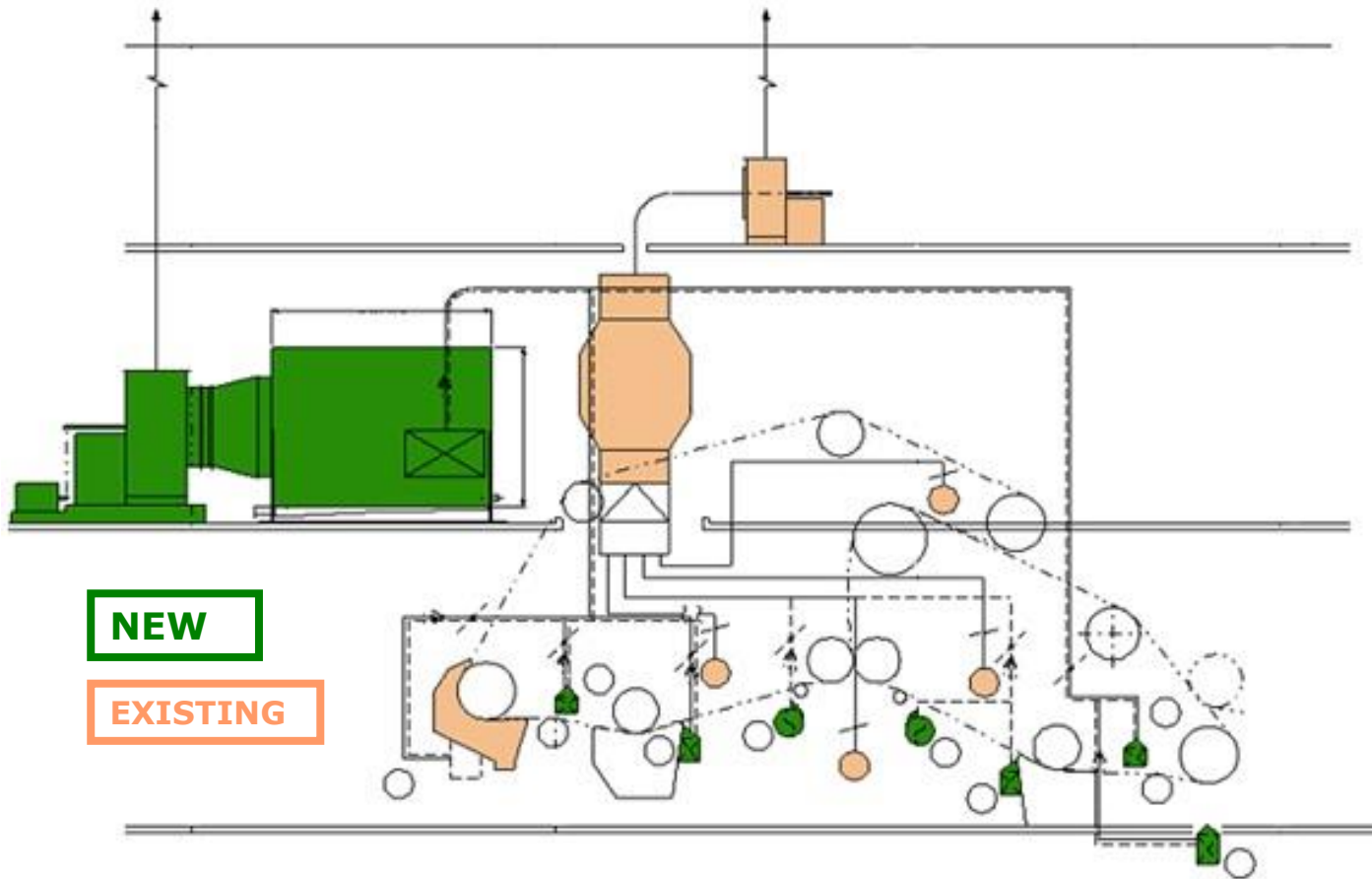


Outside wire loop



## Typical Cross-Machine Duct

©2019. The contents of this presentation are the property of Enerquin Air Inc. No part of this presentation may be reproduced or transmitted in any form or by any means, electronic or mechanical, including photocopying, recording, or any information storage and retrieval system, without permission in writing from Enerquin Air Inc.



**NEW**

**EXISTING**

©2019. The contents of this presentation are the property of Enerquin Air Inc. No part of this presentation may be reproduced or transmitted in any form or by any means, electronic or mechanical, including photocopying, recording, or any information storage and retrieval system, without permission in writing from Enerquin Air Inc.

## Performance Results

	<b>Before</b>	<b>After</b>
Humidity (lb. H <sub>2</sub> O/lb. Dry Air)	0.025	0.0085
Mass Flow Out of PM (lb. H <sub>2</sub> O/lhr.)	18.17	7.83

→ 50% reduction in water mass flow dispersed in machine room



**SYSTEM OFF**



**SYSTEM ON**

©2019. The contents of this presentation are the property of Enerquin Air Inc. No part of this presentation may be reproduced or transmitted in any form or by any means, electronic or mechanical, including photocopying, recording, or any information storage and retrieval system, without permission in writing from Enerquin Air Inc.



©2019. The contents of this presentation are the property of Enerquin Air Inc. No part of this presentation may be reproduced or transmitted in any form or by any means, electronic or mechanical, including photocopying, recording, or any information storage and retrieval system, without permission in writing from Enerquin Air Inc.

Thank you for your attention!

Lawrence Yane  
[LawrenceY@enerquin.com](mailto:LawrenceY@enerquin.com)

Interested in joining TAPPI?  
Visit [tappi.org](http://tappi.org) for more information

*Tyler Mast*  
[TMast@tappi.org](mailto:TMast@tappi.org)  
1(770)209-7345

*Please complete the post webinar survey!*